



ONVIF Server
for
Aimetis Symphony
Installation and Usage

Disclaimers and Legal Information

Copyright® 2015 Aimetis Corp. All rights reserved.

This material is for informational purposes only. Aimetis makes no warranties, express, implied or statutory, as to the information in this document.

Complying with all applicable copyright laws is the responsibility of the user. Without limiting the rights under copyright, no part of this document may be reproduced, stored in or introduced into a retrieval system, or transmitted in any form or by any means (electronic, mechanical, photocopying, recording, or otherwise), or for any purpose, without the express written permission of Aimetis Corp.

Aimetis may have patents, patent applications, trademarks, copyrights, or other intellectual property rights covering subject matter in this document. Except as expressly provided in any written license agreement from Aimetis, the furnishing of this document does not give you any license to these patents, trademarks, copyrights, or other intellectual property.

Aimetis and Aimetis Symphony are either registered trademarks or trademarks of Aimetis Corp. in the United States and/or other countries.

For the most up-to-date contact information go to www.aimetis.com.

1

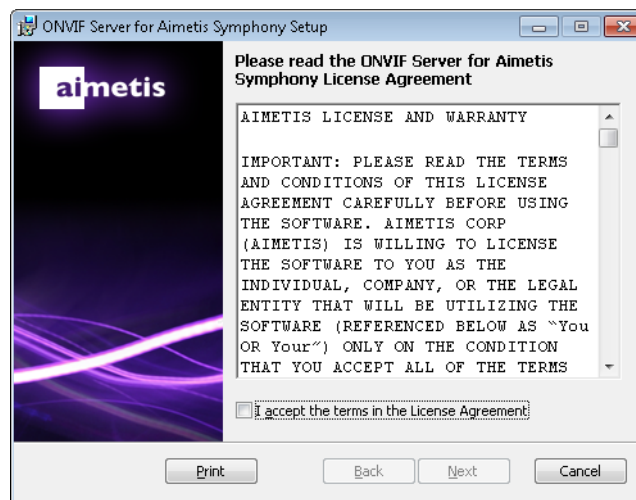
ONVIF Server for Aimetis Symphony

Aimetis Symphony can stream live and historical video via ONVIF Profile S and Profile G. To enable this capability, ONVIF Server for Aimetis Symphony must be installed on the Aimetis Symphony server. This document outlines the installation, configuration, and usage steps for this component.

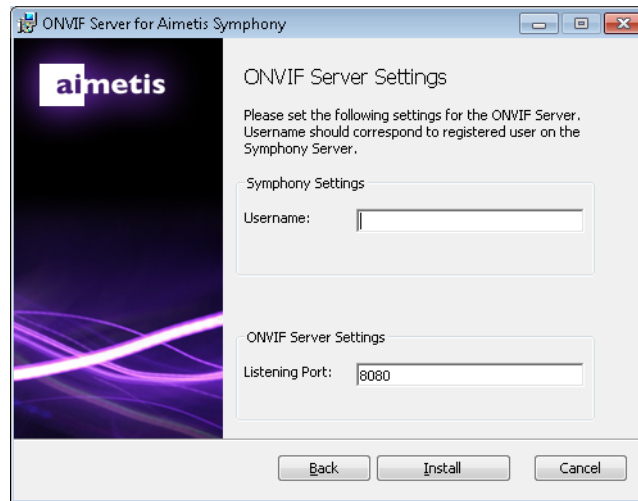
Installation

You must install ONVIF Server for Aimetis Symphony on the same server that has Symphony Server installed.

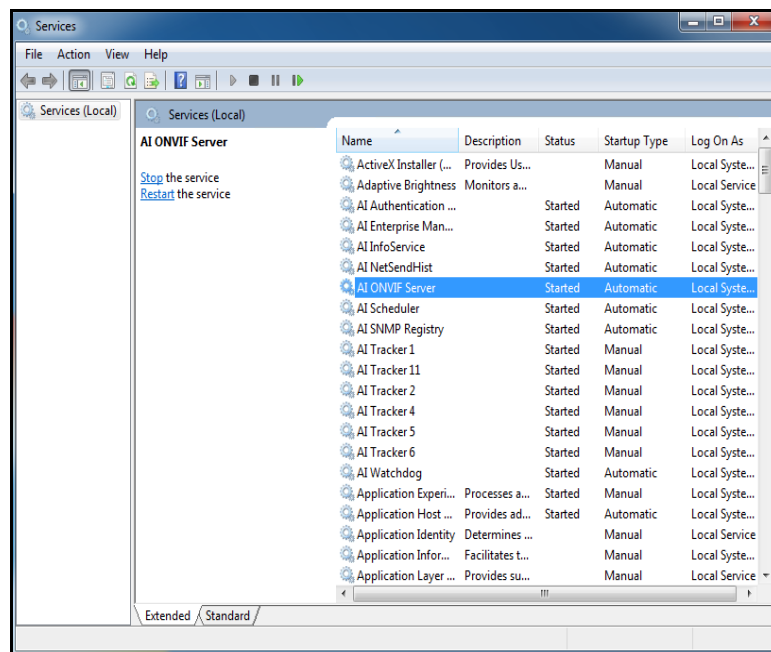
1. Download and launch the ONVIF Server for Aimetis Symphony installer.
2. Accept the **End User License Agreement** and click **Next**.



3. Enter a user name for a registered Symphony user with sufficient privileges to view cameras.
4. Enter an unassigned port number. You may use the default 8080 port, or a port between 1025 and 65535 inclusive.



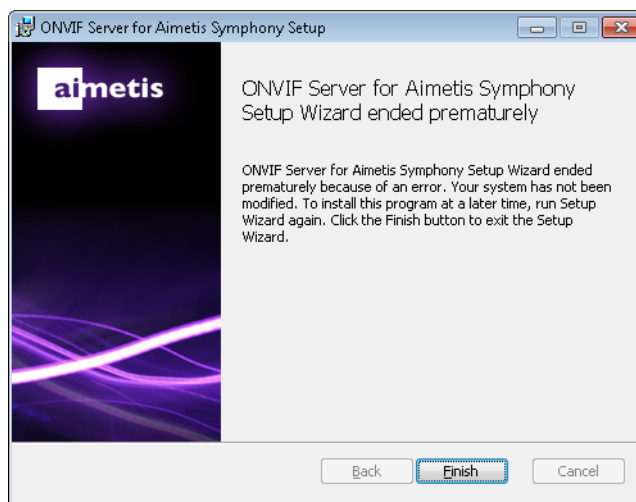
5. Click **Install** and then **Finish** once the installation process has completed.
6. Check Services on your machine to see if the AI ONVIF Server has started: Windows Start menu> enter Services in the Search programs and files> select the Services program.



7. Launch the application that will receive video from the ONVIF server.
Cameras available from Symphony will be detectable by your application using ONVIF discovery.

Troubleshooting

Installation



Issue: The ONVIF Server for Aimetis Symphony Server installation ended prematurely.

Cause: The ONVIF for Aimetis Symphony Server must be installed on the same server that has Symphony Server installed.

Solution: Install the ONVIF for Aimetis Symphony Server on a machine that has Aimetis Symphony Server installed.

Updating Username, Password, or Port

The ONVIF Server for Aimetis Symphony installer username, password, or port can be manually updated using the Symphony Client Manual Configuration Editor.

1. From the **Server** menu, select **Manual Configuration Editor**. The Server Configuration dialog box opens.
2. Click **Add a new setting...** in the first row to activate the cells.
3. In the blank field under the **Type**, **Section**, **Key**, and **Value** columns enter:
 - Type=Server, Section=Main, ID=<serverid>, Key=ONVIFServerUsername, Value=<input>
 - Type=Server, Section=Main, ID=<serverid>, Key=ONVIFServerPassword, Value=<input> (encrypted password, get it by running dbupdater “select * from [user]”)
 - Type=Server, Section=Main, ID=<serverid>, Key=ONVIFServerPort, Value=<input>
4. Click **OK**. (Verify that the setting has been added.)
5. Click **Close** and restart Aimetis Symphony.