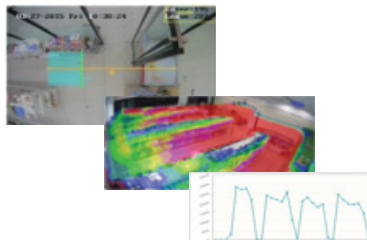
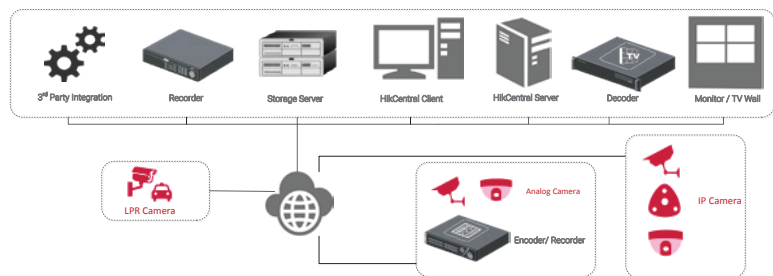




RETAIL SOLUTIONS

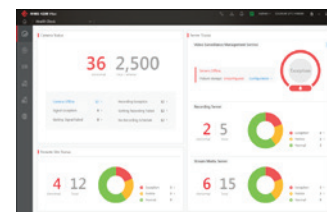
Hikvision retail solution provides:

- Ensures around-the-clock safety for customers, staff, and assets
- Resolves transaction disputes and aids loss prevention
- Reports customer analytics for smart business decisions



Built-in Analytics with Statistics Report

- Vehicle / human events detect
- Business intelligence statistics
- Statistics by day / week / month / year
- Third party events via physical I/O or API
- Flexible recording and alarming mechanism



Device Health Monitoring

- Centralized Dashboard display for system and device status
- Quickly drill down to pinpoint problem device or network segment
- Automatic refresh of equipment status
- Create and export device reports for easy maintenance



Centralized Event Management

- Intuitive central event management across alarm list, alarm based videos and related map
- Multi-layer map or floor plan with video and control associated
- Easy access and control via web browser, PC Client, or mobile devices

RETAIL SOLUTIONS



Vehicle Access



LPR Cameras

- 1080p @ 60fps and detects up to 100 mph
- Physical I/O works with external lights, IR, and inductive loop

Store Entrance



LightFighter™ Cameras

- 140dB WDR provides incredible footage for high contrast lighting environments
- Face detection



People Counting Cameras

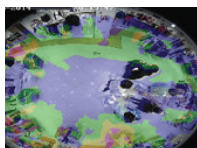
- Get a precise customer flow statistic to evaluate sales performance
- Dual lens design, 97% accuracy



PVM

- 22" or 32" 1080p displays
- HDMI / VGA / USB / TVI input, TVI / BNC out on selected models

Shopping Area



HD Cameras

- H.265+ to reduce bandwidth
- 1.3 MP to 4K various camera options
- Heat mapping analysis to tell store owner which area attracts the most
- Covert camera for discreet monitoring
- Height strip camera with ROI

Parking Lot



HD Cameras / PTZ

- Up to 4K with 36x optical zoom
- Ultra low light with long range IR
- Intrusion / no-stopping zone alerts / auto tracking
- License plate recognition

POS Integration



POS Integration

- Transaction data overlay
- Sort and search by time period, transaction type, amount, SKU, exception type, and more
- Immediate access to video

Centralized Video Management



Recorder / Storage

- Blazer Express: Windows-based NVR with advanced camera management and reporting
- Robust video / event live view and storage
- Advanced event searching and playback



HikCentral Management Software

- From basic to large multi-site solutions
- Works with Hikvision devices for essential analytics, event, and map management
- Integrates with third party for end-to-end enterprise solutions



HD Monitors

- Up to 84" – suitable for 24 hour operation
- 1080p and 4K options available